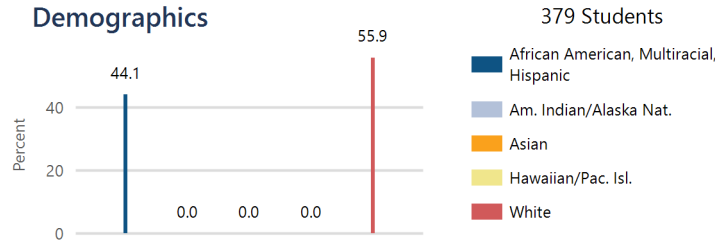




Leoti USD 467

106 S Indian Rd, Leoti, KS 67861-0967
 (620) 375-4677
 www.leoti.org

System Accreditation Status: **Accredited**
 ESSA Annual Meaningful Differentiation: **Meeting**
 Grades: **PK-12**
 Superintendent: **Lori Maxwell**

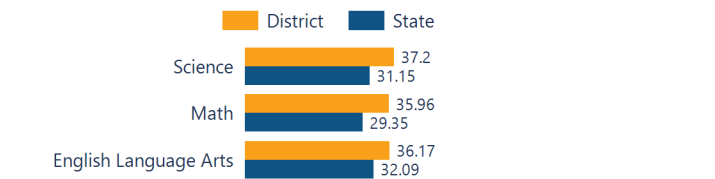


District Kansans Can Star Recognition

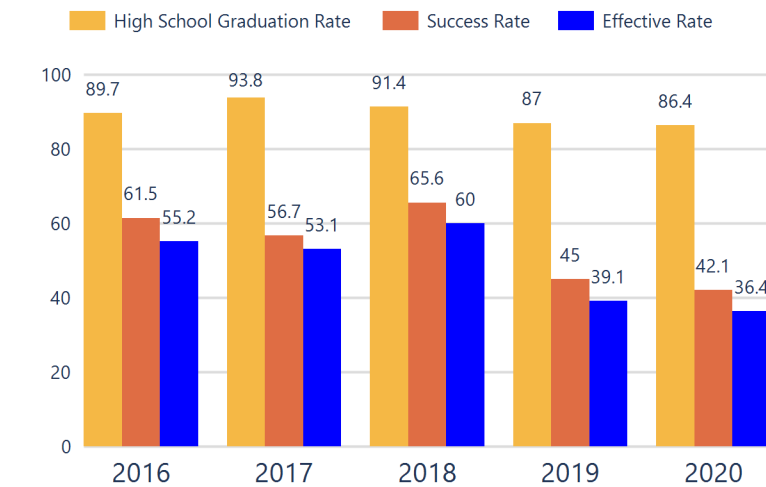
	Gold	Silver	Bronze	Copper
Social-Emotional Growth				
Kindergarten Readiness				
Individual Plan of Study				
Academically Prepared for Postsecondary				★
Civic Engagement				
High School Graduation	★			
Postsecondary Success				★

Academically Prepared for Postsecondary Success

The percentage of students who scored at Levels 3 and 4 on the state assessment.



District Postsecondary Effectiveness



Kansans CAN lead the world!
Graduation 95%
 Effective Rate 70-75%

Five-Year Graduation Avg 90.1%

Five-Year Success Avg 55.9%

Five-Year Effective Avg 50.4%

95% Confidence Interval for the Predicted Effectiveness Rate 47.9 - 52.1%

The numerator and denominator in the Five-Year Averages contain total student counts over five years (2016-2020) and are rounded to the nearest whole number.

- Graduation Rate:** The 4-year adjusted cohort graduation rate is the number of students who graduate in four years with a regular high school diploma divided by the number of students who entered high school as 9th graders four years earlier (adjusting for transfers in and out).
- Success Rate:** A student must meet one of the four following outcomes within two years of High School graduation.
 - Student earned an Industry Recognized Certification while in High School.
 - Student earned a Postsecondary Certificate.
 - Student earned a Postsecondary Degree.
 - Student enrolled in Postsecondary in both the first and second year following High School graduation.
- Effective Rate:** The calculated Graduation Rate multiplied by the calculated Success Rate.

GRADUATION RATE

The four-year adjusted cohort graduation rate is the percentage of students in a cohort, adjusted for transfers into and out of the school, district, or state, who graduate with a regular high school diploma within four years of entering high school.

95.2% State: **District ESSA Expenditures Per Pupil** 89.3

ATTENDANCE RATE

Rate at which students are present at school, not including excused or unexcused absences.

Expenditures reflect those for the normal day-to-day operation of schools as reported by the Local Education Agency. The following expenditures are excluded: capital outlay, school construction and building improvements, equipment and debt services. **\$15,182**

94.6% State: 92.1 State: **\$13,814**

CHRONIC ABSENTEEISM

Percentage of students who miss 10% or more of school days per year either with or without a valid excuse.

14.1% State: 25.4 **Click here for State Financial Accountability.**

DROPOUT RATE

The dropout rate is calculated annually and reflects the number of seventh–twelfth grade students who drop out in any one school year. A dropout is any student who exits school between October 1 and September 30 with a dropout EXIT code AND does not re-enroll in school by September 30.

1.7% State: 1.4





District Academic Success

State Assessment scores are displayed by student subgroup over three years time in three subjects: Math, English Language Arts (ELA), and Science. Assessment scores are not available for the 2020 school year.

ALL STUDENTS

	2019-20			2020-21			2021-22		
	Math	ELA	Sci	Math	ELA	Sci	Math	ELA	Sci
Level 1	N/A	N/A	N/A	25.72	23.90	33.75	20.19	30.15	27.90
Level 2	N/A	N/A	N/A	48.05	35.12	27.50	43.84	33.66	34.88
Level 3	N/A	N/A	N/A	19.90	29.75	23.75	24.63	27.63	20.93
Level 4	N/A	N/A	N/A	6.31	11.21	15.00	11.33	8.54	16.27

FREE AND REDUCED LUNCH STUDENTS

	2019-20			2020-21			2021-22		
	Math	ELA	Sci	Math	ELA	Sci	Math	ELA	Sci
Level 1	N/A	N/A	N/A	36.36	34.69	53.84	29.34	43.95	42.10
Level 2	N/A	N/A	N/A	46.46	39.79	23.07	46.73	32.96	34.21
Level 3	N/A	N/A	N/A	15.15	21.42	12.82	17.39	20.87	15.78
Level 4	N/A	N/A	N/A	2.02	4.08	10.25	6.52	2.19	7.89

STUDENTS WITH DISABILITIES

	2019-20			2020-21			2021-22		
	Math	ELA	Sci	Math	ELA	Sci	Math	ELA	Sci
Level 1	N/A	N/A	N/A	64.51	74.19	N/A	54.83	77.41	75.00
Level 2	N/A	N/A	N/A	29.03	22.58	N/A	35.48	16.12	16.66
Level 3	N/A	N/A	N/A	6.45	3.22	N/A	9.67	6.45	8.33
Level 4	N/A	N/A	N/A	0.00	0.00	N/A	0.00	0.00	0.00

AFRICAN-AMERICAN STUDENTS

	2019-20			2020-21			2021-22		
	Math	ELA	Sci	Math	ELA	Sci	Math	ELA	Sci
Level 1	N/A	N/A	N/A	N/A	N/A	N/A	N/A	N/A	N/A
Level 2	N/A	N/A	N/A	N/A	N/A	N/A	N/A	N/A	N/A
Level 3	N/A	N/A	N/A	N/A	N/A	N/A	N/A	N/A	N/A
Level 4	N/A	N/A	N/A	N/A	N/A	N/A	N/A	N/A	N/A

HISPANIC STUDENTS

	2019-20			2020-21			2021-22		
	Math	ELA	Sci	Math	ELA	Sci	Math	ELA	Sci
Level 1	N/A	N/A	N/A	36.47	35.71	50.00	31.25	44.15	33.33
Level 2	N/A	N/A	N/A	45.88	35.71	29.41	45.00	36.36	35.89
Level 3	N/A	N/A	N/A	14.11	25.00	14.70	17.50	16.88	20.51
Level 4	N/A	N/A	N/A	3.52	3.57	5.88	6.25	2.59	10.25

N/A: To protect student privacy, when a subgroup has fewer than 10 students, the data are not displayed.

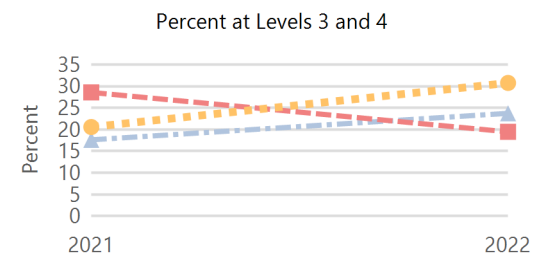
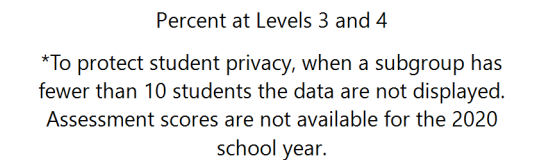
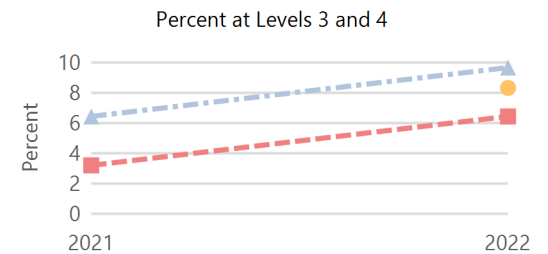
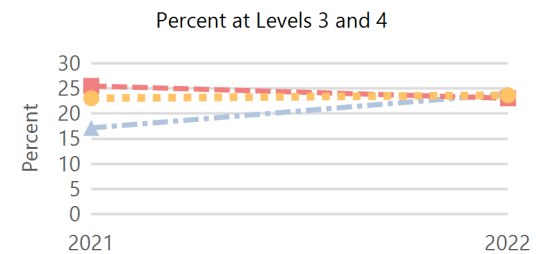
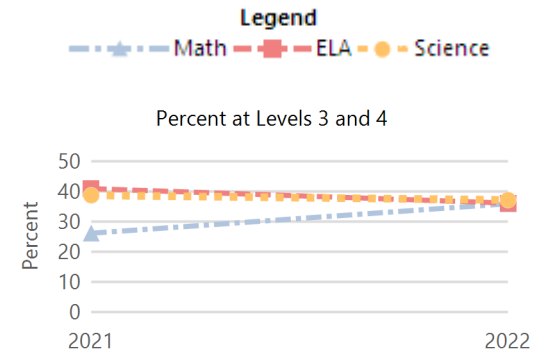
ACT Performance (2022 School Year)

ACT is a national college admissions exam that includes subject level tests in English, Math, Reading and Science. Students receive scores that range from 1 to 36 on each subject and an overall Composite score. This report provides the average Composite score for the 2022 graduating seniors who took the ACT as sophomores, juniors, or seniors.

Note: Not all eligible students completed an ACT.



Academically Prepared for Postsecondary Success



District	19.8
State	19.8